



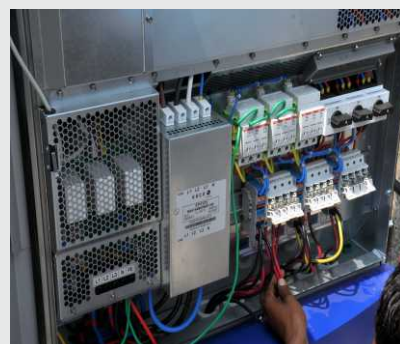
50KWP GRID CONNECTED SOLAR POWER PLANT LUCKNOW - U.P.

As a pioneer and leader in the renewable energy industry, sunwize is positioned to provide the best solutions for grid connected solar power systems. Our expertise in solar photovoltaic technologies insures you green and sustainable energy harnessed through a combination of quality products and proved engineering.

This 50KWP solar photovoltaic grid connected power plant is one of the largest PV project executed in Lucknow. The power produced form the plant will be supplied to the state grid through an 11kV transmission line. The plant will generate power and supply to the grid in the daytime.

PROJECT DATA

Type of System	Solar Photovoltaic Grid Connected Power Plant
Installed capacity	50 KWP
Type of module	Crystalline 250-225 Wp
Location	Vibhuti Khand, Gomti Nagar, Lucknow
Inverter	KACO/Powador - TL3-60
Mounting System	Roof top mounted/Fixed Axis
Transformer/Evacuation	11/33 KVA
Load	Connected to Grid/Reverse feed
CO ₂ Savings	40 Tones/Year





SOLAR PHOTOVOLTAIC POWER FOR REMOTE TELECOM SITES

Sunwize successfully completed several projects on Solar Photovoltaic Power System for telecom towers in remote locations of northern part of India, The main aim of this project is to reduce the DG running hours to the minimum. The Solar Photovoltaic Power system provides adequate power to telecom loads & charges the battery bank for supplying uninterrupted power to the Telecom loads. The battery gets charged through Solar and DG power in order of priority. The monitoring and control panel continuously monitors the battery bank voltage before switching between Solar and DG Power.

RTU System

The system is supplied with Remote Terminal Unit (RTU) which facilitates for remote monitoring and control. The objective of RTU is to acquire real-time data of the Solar, Battery, D.G. & SMPS and send it to centralized server for real time data monitoring and Control, This system can send the data frequently (pre-defined intervals) from the site, The main feature of this system is, the sites can be remotely monitored & controlled from one central location without visiting the actual site.

REFERENCE CHART

Date	Feb-2015
Location	Haidergarh Sultanpur Road, U.P.
Type of System	5kWp to 10 kWp Solar PV-Hybrid System
Type of Module	125Wp/200Wp/240Wp-Crystalline
Load	BTS/Microwave Repeater - Station
Charge Controller	MPPT, built in control panel along with D.G. control logic with data acquisition, Remotemonitoring and Control (RTU)

